

Self-host your App without Docker? Why Not?

Putu Sintia

Infrastructure Engineer at Zero One Group



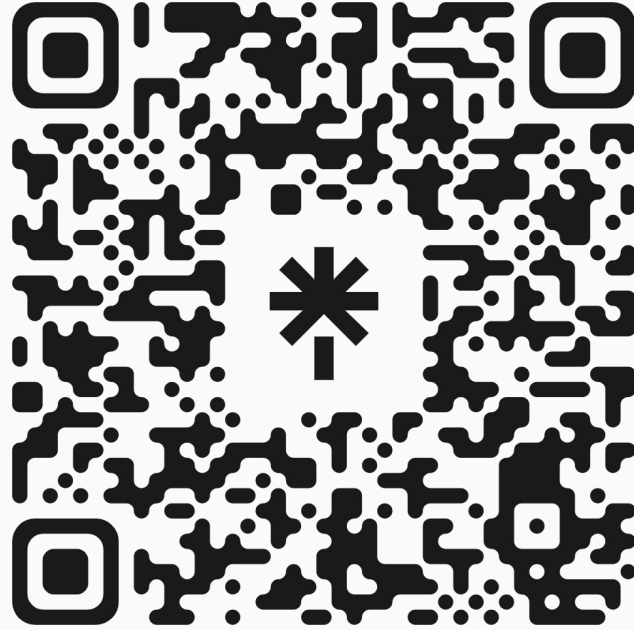


Ni Putu Sintia Wati

- Infrastructure Engineer at Zero One Group
- 2 years of experience in cloud/infra field
- Alumnus of FMIPA Udayana. Bachelor of Informatics, graduated in 2023
- <https://sintiacloudy.vercel.app/> (my personal site)
- <https://zero-one-group.com/> (company site)

Minimum Knowledge

- have minimum knowledge in linux



<https://linktr.ee/SintiaInITBootcampUndiksha2025>

Pre-Session

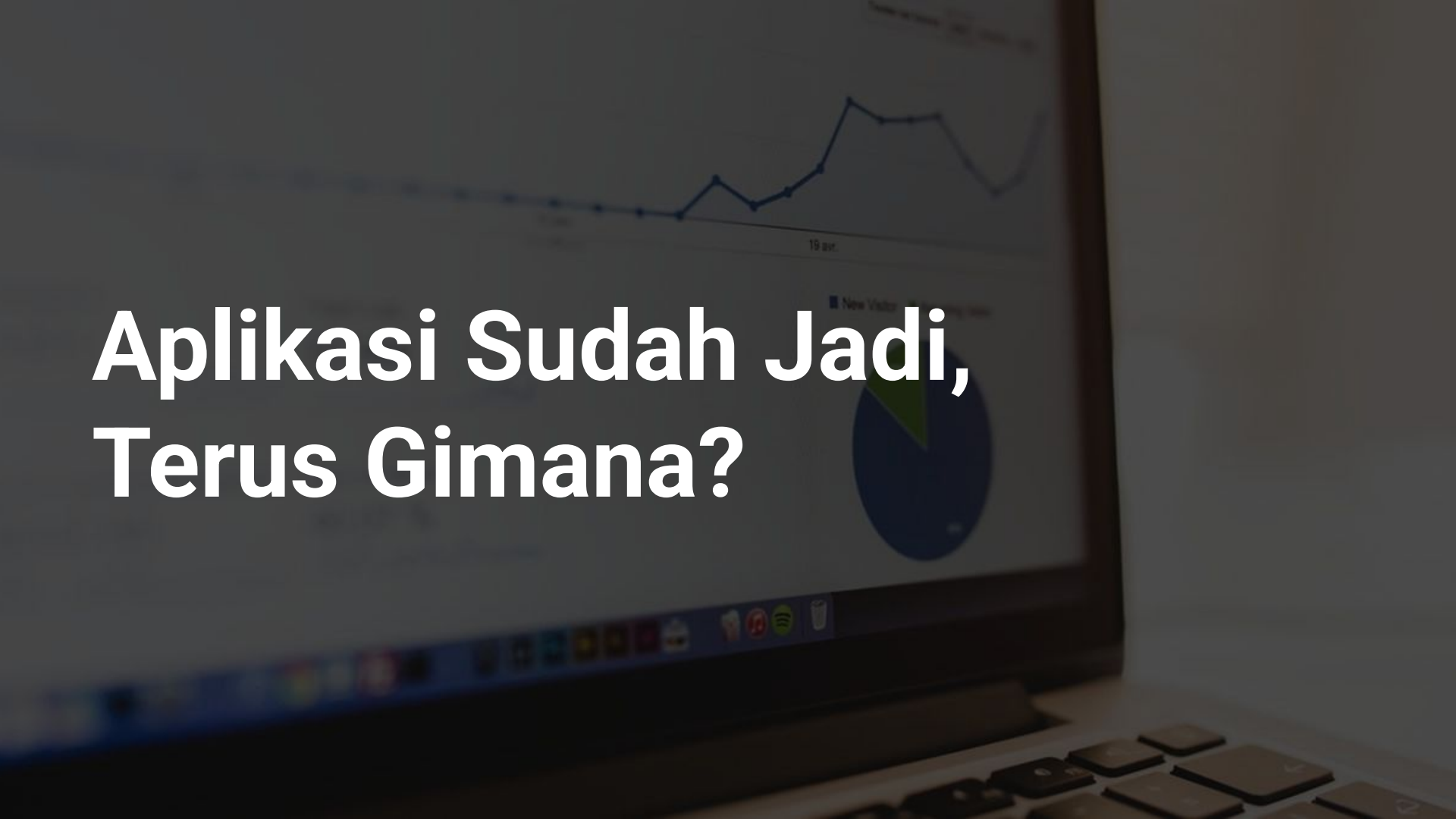
19 av.

■ New Visitor ■ Returning Visitor



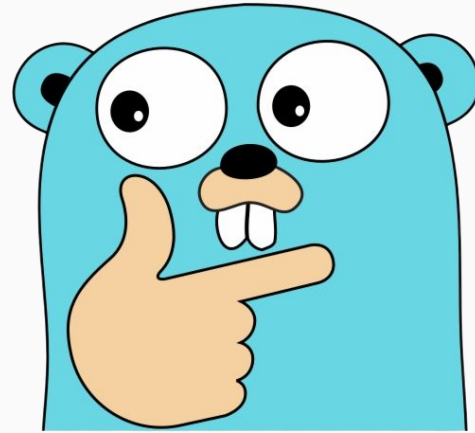
<https://github.com/sintiasnn/api-basic-go>

**Aplikasi Sudah Jadi,
Terus Gimana?**





```
pnpm run dev
```



```
go run main.go
```

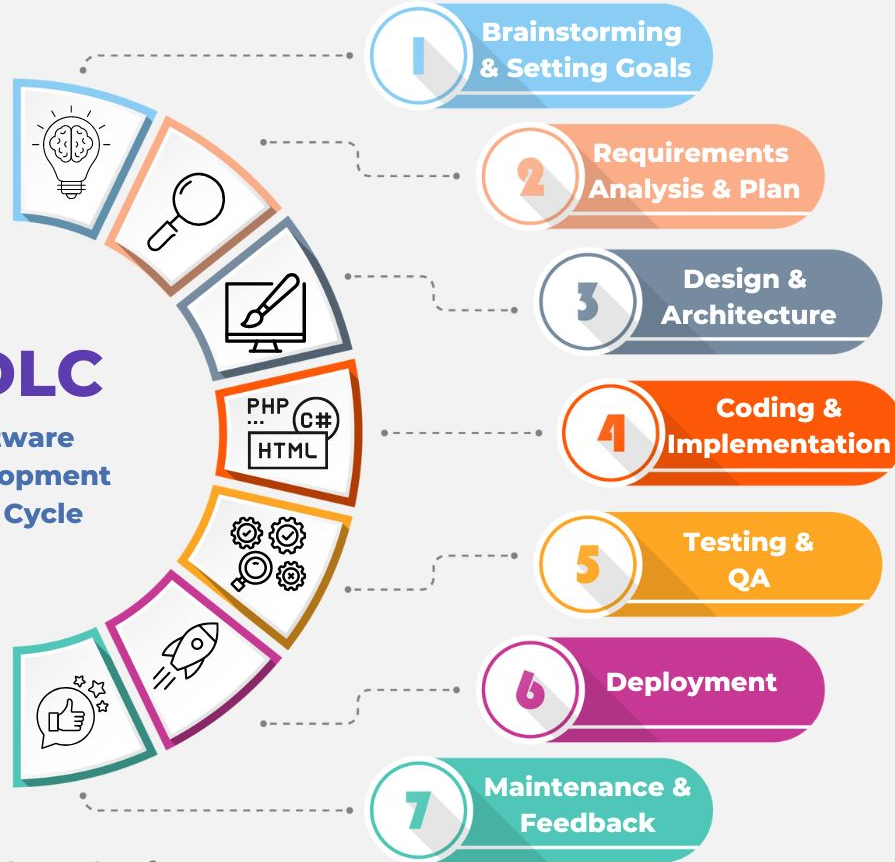
Terminal ditutup?

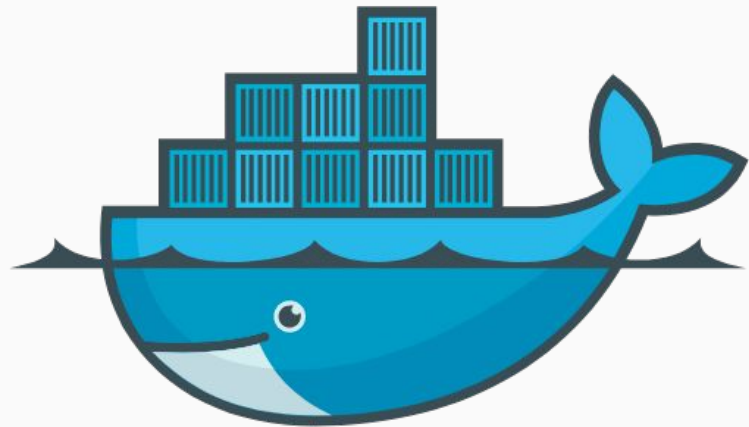
Server *restart*?

Aplikasi *crash* karena error?

SDLC

Software
Development
Life Cycle






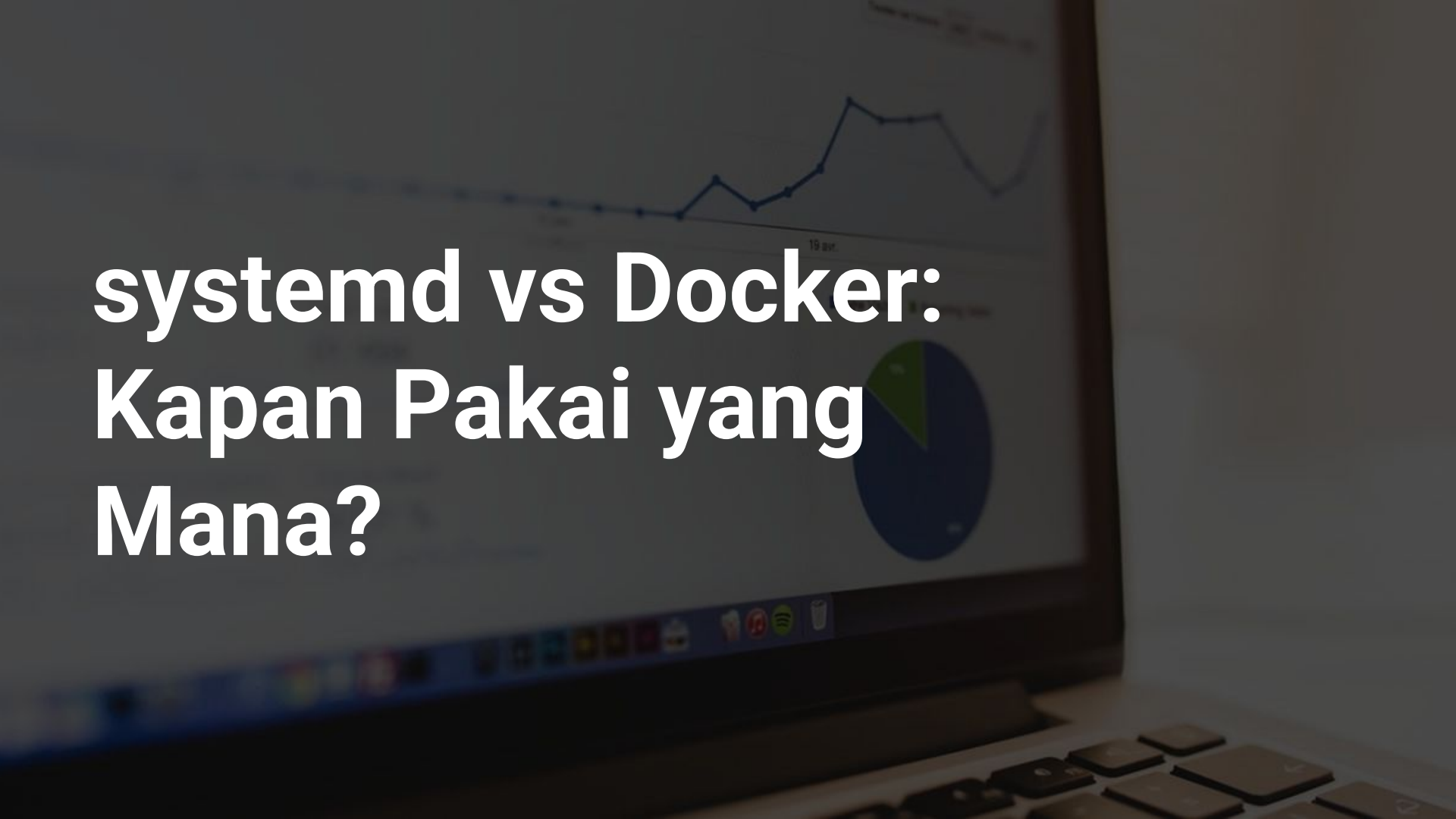
Apa itu systemd?



`systemd` adalah *init system* dan *service manager* untuk hampir semua distribusi Linux modern (seperti Ubuntu, Debian, CentOS, dan Fedora). Ia adalah program pertama yang dijalankan saat Linux booting (disebut *init system*) dan bertugas untuk memulai, menghentikan, dan mengelola semua program lain di latar belakang (yang disebut *services* atau layanan)

A laptop screen is shown in a dimly lit environment. The screen displays a line graph with a blue line and a globe. The taskbar at the bottom of the screen is visible, showing several application icons. The text 'Live Demo: Deploy Aplikasi Go dengan systemd' is overlaid on the screen in a large, white, sans-serif font.

Live Demo: Deploy Aplikasi Go dengan systemd

The image shows a close-up of a laptop screen. The screen displays a line graph with a blue line and a pie chart with a blue and green segment. The text 'systemd vs Docker: Kapan Pakai yang Mana?' is overlaid in white. The laptop keyboard is visible at the bottom.

systemd vs Docker: Kapan Pakai yang Mana?

Gunakan `systemd` jika:

- Deploy aplikasi sederhana di satu server/VPS.
- Sumber daya server terbatas.
- Ingin proses yang *super lightweight*.
- Aplikasi tidak punya banyak dependensi rumit.

Gunakan Docker jika:

- Butuh isolasi lingkungan yang ketat.
- Aplikasi memiliki banyak dependensi (database, Redis, dll).
- Ingin portabilitas antar lingkungan (dev, staging, prod) yang mudah.
- Membangun arsitektur *microservices*.

overview deploy dengan docker

19 Oct

New Visitor Returning Visitor



Tanya Jawab



Terimakasih

